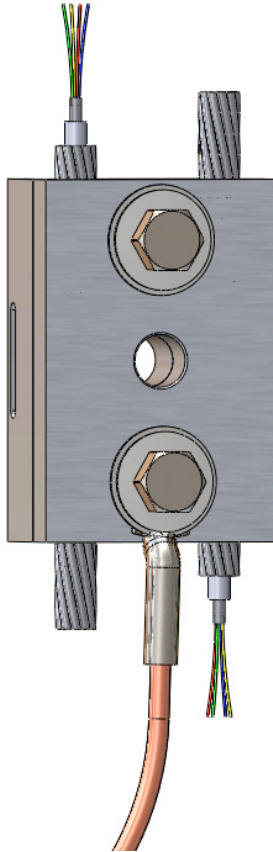


"Better Products by Design"



The **CPI OPGW Grounding Down Lead Clamp** is designed to connect OPGW to the pole or structure as it is routed down to the splice-box. The grounding lug can be attached to either bolt point and adds an additional layer of safety by grounding out any voltage that may be picked up through the OPGW as it travels through the phases.



FEATURES

Offers a grounding point for both legs of OPGW.

Will not cause signal attenuation.

Through hole accepts 5/8" bolt for direct attachment to Wood or Steel Poles.

Side slots accept banding up to 1-1/2"

Exclusive high-conductivity grit type corrosion inhibitor is factory applied for ease of installation and longevity while the connector is in service.

Constructed of the finest quality aluminum alloy for optimal conductivity.

Stainless Steel hardware for corrosion resistance.

Short manufacturing lead times allows most sizes to be available In-Stock directly from the factory.

Notes:

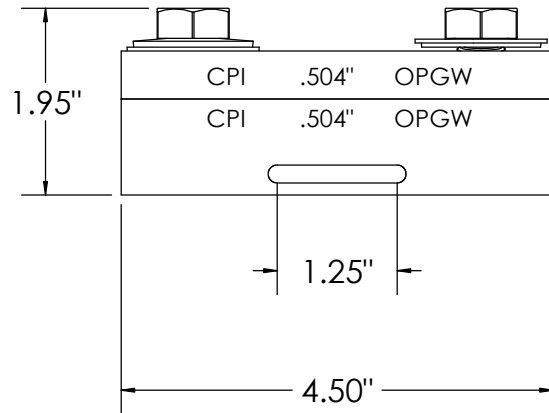
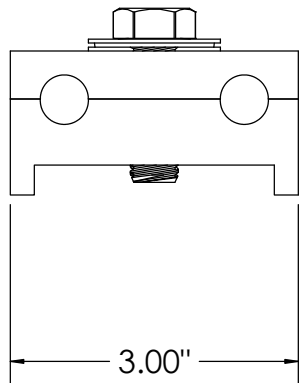
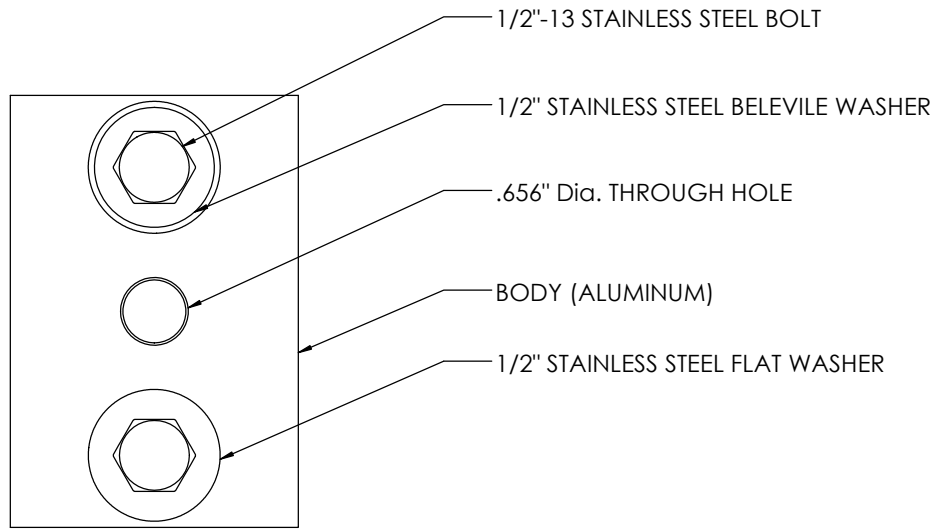
Lattice tower attachments are available upon request.

Please provide Cable Outside Diameter when ordering.

Customer to supply grounding wire termination lug.

See Reverse for product specs. & part #'s

OPGW GROUNDING DOWNLEAD CLAMP



Catalog #	OPGW O.D.
OGDLC .504	.504"
OGDLC .551	.551"
OGDLC .638	.638"
OGDLC .676	.676"
OGDLC .709	.709"

Please consult factory for OPGW sizes not listed here.